

# LaGrange Co. SWCD 2010 Annual Tree Sale

## Price list and order form

**Name:** \_\_\_\_\_ **Phone:** \_\_\_\_\_

**Address:** \_\_\_\_\_

**City/State/Zip:** \_\_\_\_\_

**Email:** \_\_\_\_\_

1. Send Payment with order. MAKE ALL CHECKS PAYABLE TO: LaGrange Co. SWCD, 910 S. Detroit, LaGrange, IN 46761 (260)463-3471 ext 3
2. Orders will be filled on a first come first serve basis. Order early to assure we can fill your order
3. Trees are bare root stock and are available to anyone and may be planted without restrictions.
4. WE DO NOT FURNISH REPLACEMENTS. THERE IS NO GUARANTEE!
5. Confirmation of orders will be sent on receipt.
6. Notification of date and location for pick-up will be sent in late March.

### Evergreen Trees

Species	Size	Amt in Bundle	Cost per	Qty Ordered	Total
American Arborvitae	14-26"	10	15.00		
		25	30.00		
White Pine	12-18"	10	15.00		
		25	30.00		
Blue Spruce	7-12"	10	15.00		
		25	30.00		
Norway Spruce	8-14"	10	15.00		
		25	30.00		
Douglas Fir	12-18"	10	15.00		
		25	30.00		
Fraser Fir	7-12"	10	15.00		
		25	30.00		

### Deciduous Trees

White Oak	18-24"	10	15.00		
		25	30.00		
Black Alder	18-24"	10	15.00		
		25	30.00		
Red Oak	18-36"	10	15.00		
		25	30.00		
Tulip Poplar	18-24"	10	15.00		
		25	30.00		
Sugar Maple	18-24"	10	15.00		
		25	30.00		
Black Oak	16-32"	10	15.00		
		25	30.00		

### Flowering Trees and Shrubs

Washington Hawthorn	18-24"	10	15.00		
		25	30.00		
Hazelnut	18-24"	10	15.00		
		25	30.00		
Sargenti Crabapple	18-24"	10	15.00		
		25	30.00		
Flowering Dogwood	18-24"	10	15.00		
		25	30.00		
American Plum	18-24"	10	15.00		
		25	30.00		
Highbush Cranberry	18-24"	10	15.00		
		25	30.00		

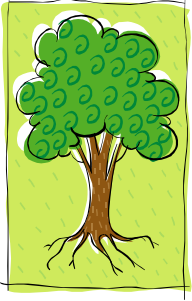
### Bundles

Evergreen (includes 5 each of the evergreen above, except american arborvitae)	40.00		
Deciduous (includes 5 each of the deciduous above)	40.00		
Flowering Trees & Shrubs (includes 5 each of the above)	40.00		

**We are willing to entertain substitutions on bundles if there is a tree you do not want.**

Sub Total	\$
Tax (7%)	\$
Total	\$

Take Pride in America



Plant a Tree

# Tree Sales Program

## 2010 Seedling Data Information Sheet

**AMERICAN ARBORVITAE:** Also known as Northern White Cedar. A fast growing, dense, green columnar tree. It has feather-like yellowish-green needles with blunt tips. Grows on many sites from wet areas to upland sites. Reaches heights of 40-60 feet and 12' in width. Very useful for wind breaks, hedges and wildlife habitat.

**WHITE PINE:** Grows 50-80' tall with a 20-40' spread. Growth rate is 3-5' per year. Prefers sandy-loam soils: avoid clay-wet soils. Soft, light green needles are in bundles of 5, 3-5" long, slender and flexible. Shade tolerant and fast growing: excellent for windbreaks and wildlife habitat. To keep foliage full to the bottom, avoid crowding-plant at least 25' apart.

**BLUE SPRUCE:** Grows 50-75' tall with a 25' spread at maturity. Should reach 6' in 8-9 years, starting with a 3-year seedling. Stiff silvery-blue needles are 1" long. Not all plants will be blue. Use as an ornamental of a dense, colorful windbreak. Ordinary soil, average moisture, full sun.

**NORWAY SPRUCE:** Fast growing to 150'. Reaches 6' in 6-7 years from a 3-year seedling. Exceptionally fast growing, especially desirable for Christmas trees, ornamentals, timber and windbreaks. Somewhat shade tolerant. Color usually dark green; branches exhibit a gentle downward swoop from the trunk ending in an upward point at the outer extent.

**DOUGLAS FIR:** Grows 40-80' tall, with a 12-20' spread. Prefers moist, well drained soils. Has flat needles growing one inch long. Foliage is blue-green to dark green. Firs are beautiful, aromatic trees, but among some of the more slowly maturing evergreens.

**FRASER FIR:** Grows 30-50' tall with a 1-2' trunk diameter with a scaly gray or brown bark. Prefers high elevation and coniferous forests. Known for its 90 degree angle spread with underside of silvery-white bands. Pointed crown of silvery white aromatic foliage. Produces dark purple cones covered in a fine hair.

**WHITE OAK:** grows 80-100' tall, prefers moist, well drained upland soils. Acorns eaten by turkey, blue jays, ruffed grouse and squirrels. Leaves are 4-9" long: 2-4" wide: bright green above and whitish or gray green below.

**BLACK ALDER:** grows 50-70', prefers wet soils, humid & cool regions. Nearly round and doubly saw-toothed. Shiny dark green above with tufts of light green beneath. Sheds late. Has gummy cones and twigs when young. Native to Europe.

**RED OAK:** Wide, massive long-lived shade tree. Lustrous green leaves change to russet red in the fall. Excellent yard tree, valuable lumber, wildlife food and shelter. Fast growing. Mature height 60-75'.

**TULIP POPLAR:** State tree of Indiana. A straight tall tree with peculiar notched tip, 4 pointed hairless leaves. Reaches heights of 50-100'. Known also as a Yellow Poplar. Good tree to plant in a moist to wet site.

**SUGAR MAPLE:** Mature height of 60-70'. A hardy shade tree with dark green foliage that turns shades of red and orange in the fall.

**BLACK OAK:** Grows to 50-80' with open, spreading crown. Trunk grows to 1-2' diameter; smooth gray when young and deep ridge black when old. Shiny green leaves above, yellow below, with 7-9 lobes turning dull-red in fall. Dry upland habitat; sometimes rocky, sandy, or clay. Distinguished by yellow/orange inner bark.

**WASHINGTON HAWTHORN:** Grows to 25'-35', spreads 25'-35'. White blooms in clusters late spring. Red berries throughout winter. Dark bark with thorny branches. Summer leaves: dark green; fall: orange to red.

**HAZELNUT:** Grows 10-18 ft. A large fast growing tree with showy spring flowers. Best used when naturalizing an area.

**FLOWERING DOGWOOD:** A small flowering tree with short trunk and crown of nearly horizontal branches. Mature height of 30' Showy early spring flowers, red fruit and scarlet autumn foliage.

**FLOWERING SARGENTI CRABAPPLE:** Fruit is eaten by deer, pheasant, turkey and other birds. Prefers moist to dry soils. Grows 15-20' tall.

**AMERICAN PLUM:** Grows to 20' spreads to 25'. White blossoms in early Spring. Forms colonies and thickets along fields, fences, roadsides, etc. Fruits ideal for jam with high pectin. Adaptable to climate; prefers moist, well-drained soils.

**HIGHBUSH CRANBERRY:** Grows 8-15' tall with 8-10' spread. Arching and dense, rounded form. White clusters of flowers in June and nearly round, red fruit like a cranberry. Not actually a cranberry but very similar and still edible. Attracts wildlife.